



# GAT MONTHLY MEMBERSHIP PROGRESS REPORT

Results as of: 8/31/2022

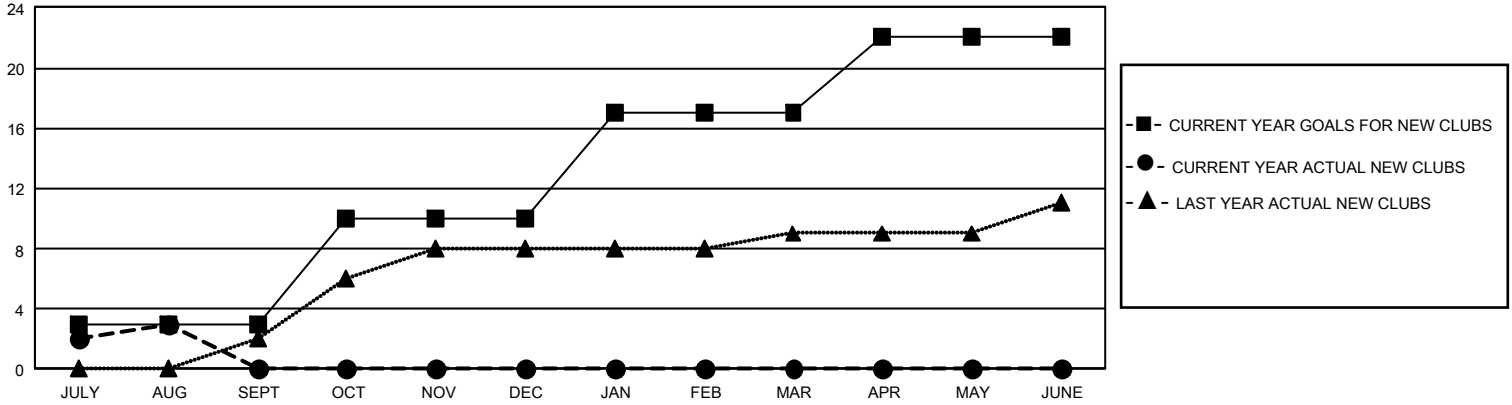
## GMT Constitutional Area 2, Group B

REPORT DOES NOT INCLUDE CLUBS IN UNDISTRICTED AREAS.

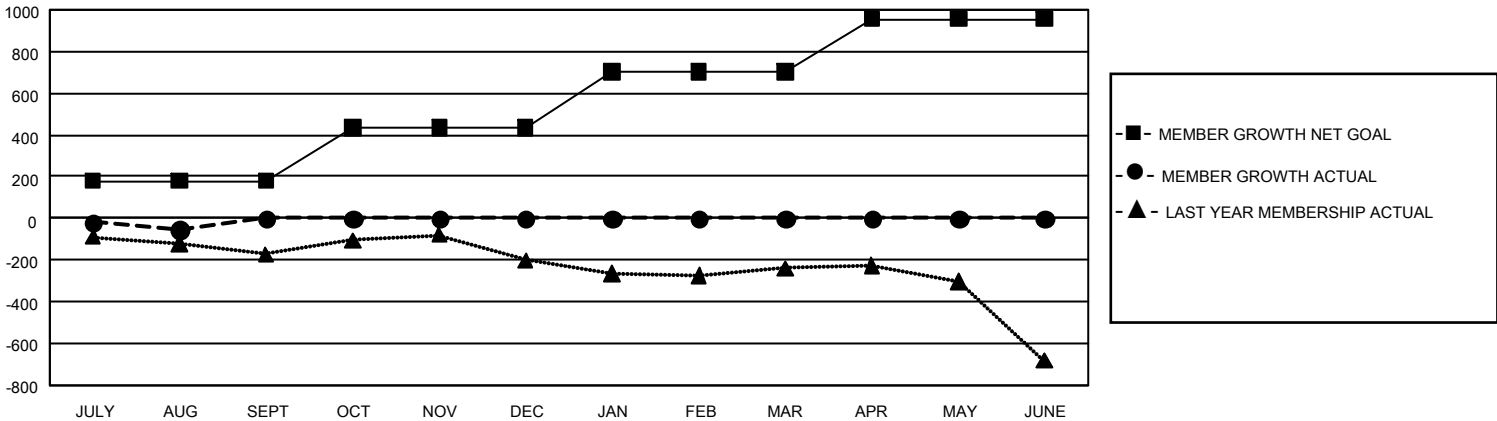
Clubs			
RESULTS FOR 2022-2023			
QUARTER	NEW CLUB GOAL	NEW CLUBS	DROPPED CLUBS
JULY/AUG/SEPT	9	3	4
OCT/NOV/DEC	21	0	0
JAN/FEB/MAR	21	0	0
APR/MAY/JUNE	15	0	0

Members			
RESULTS FOR 2022-2023			
QUARTER	MEMBER GROWTH NET GOAL	MEMBER GROWTH ACTUAL	DROPPED MEMBERS ACTUAL (including transfers)
JULY/AUG/SEPT	180	242	261
OCT/NOV/DEC	255	0	0
JAN/FEB/MAR	270	0	0
APR/MAY/JUNE	250	0	0

GOALS AND ACTUAL NEW CLUBS CUMULATIVE



GOALS AND ACTUAL MEMBERS CUMULATIVE



<b>DROPPED CLUBS: 4</b>	64 CLUBS OF 694 ADDED 1 OR MORE NEW MEMBERS	<b><u>GENDER DISTRIBUTION</u></b>	
		MALE 10,068 (64.23%) FEMALE 5,604 (35.75%) NON BINARY 1 (0.01%) PREFER NOT TO ANSWER 1 (0.01%)	
<b><u>DROPPED MEMBERS</u></b>		<a href="#">CLICK HERE FOR CUMULATIVE MEMBERSHIP DATA</a>	TOTAL FAMILY UNIT MEMBERS 2,958
DECEASED 39 CLUB CANCELLED 0 OTHER 222 <b>TOTAL 261</b>			FAMILY MEMBERS PAYING HALF DUES 1,527